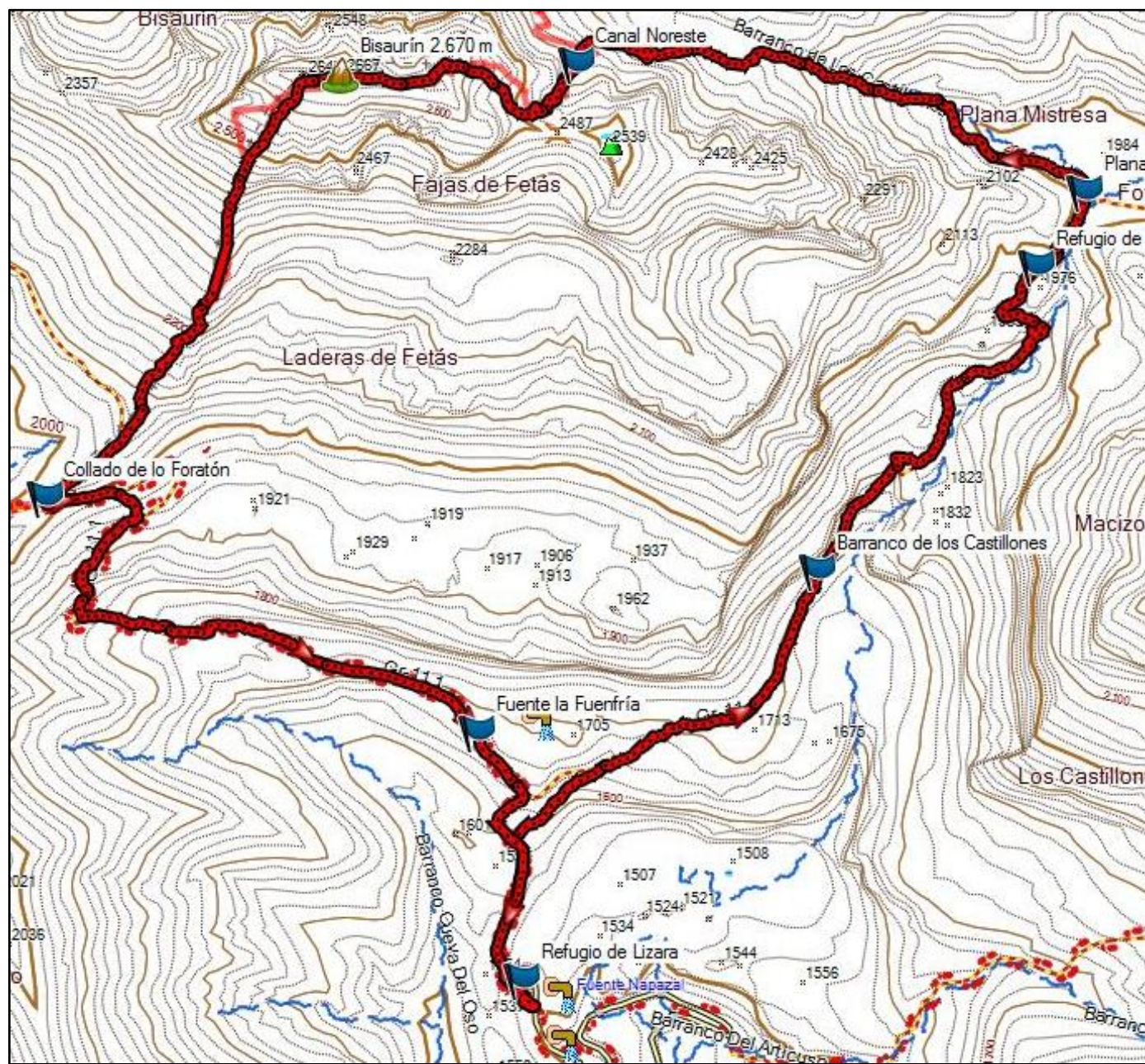
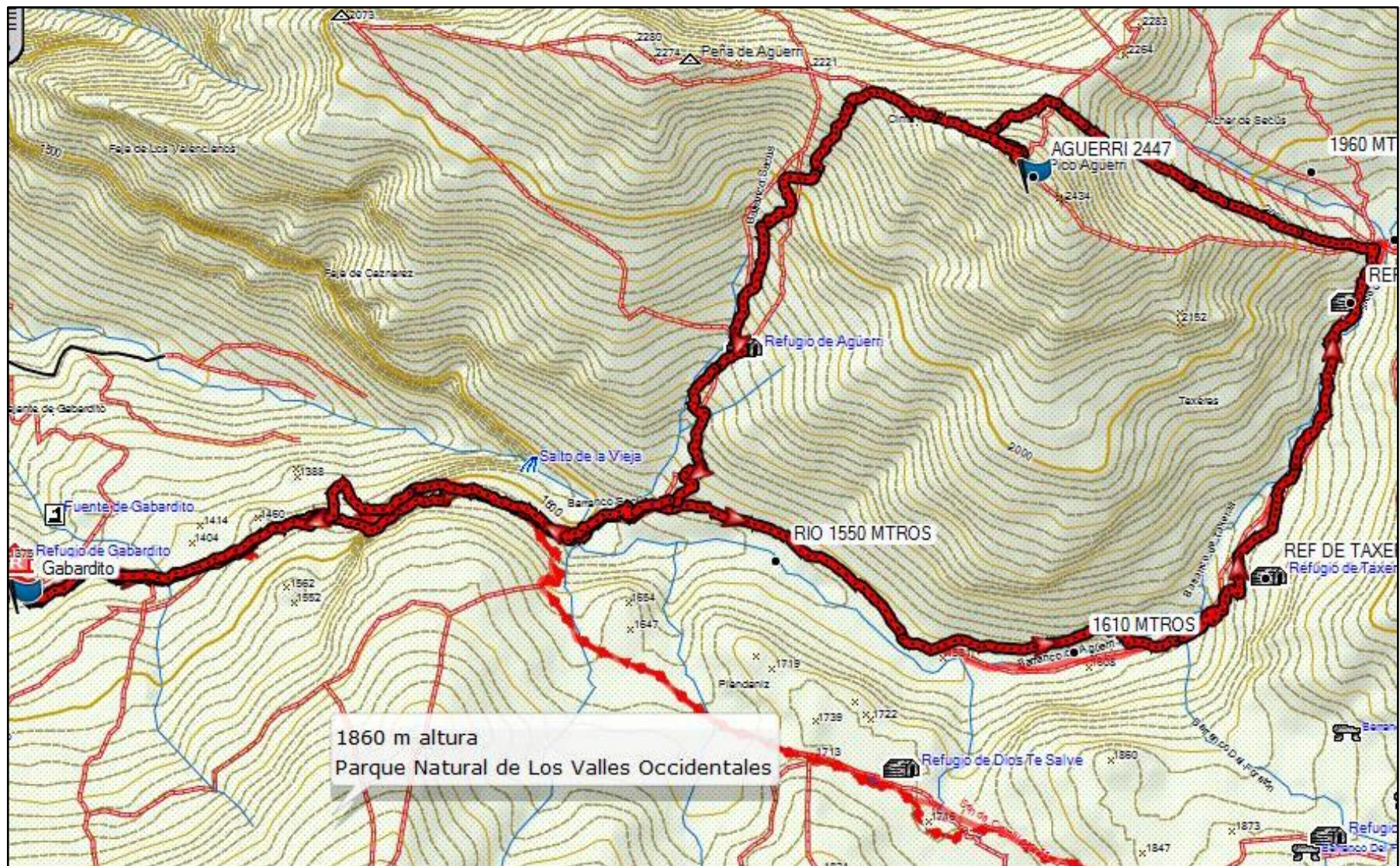


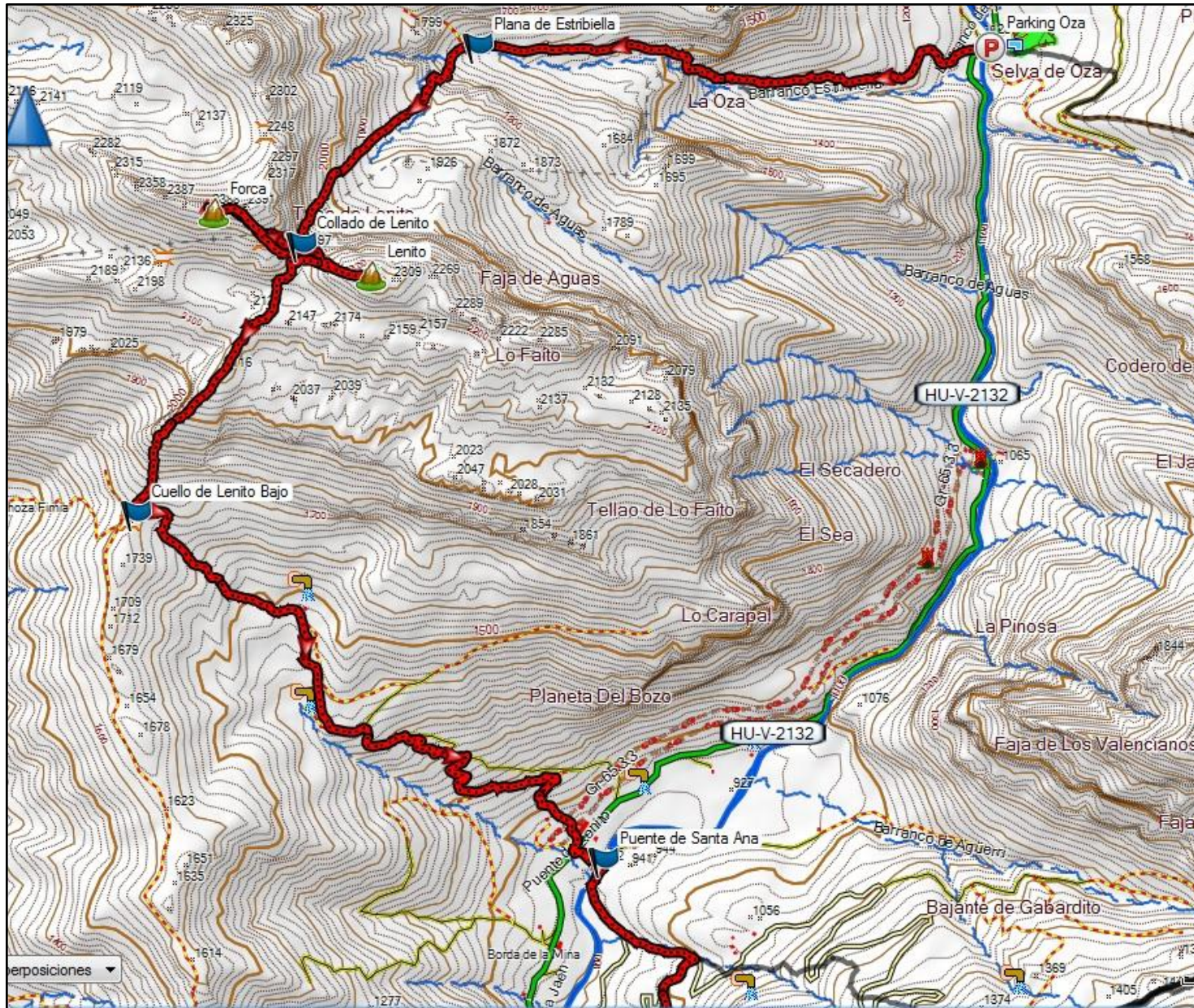
## SÁBADO 29 OPCIÓN 1: Refugio de Lizara-Bisaurín por Corredor NE



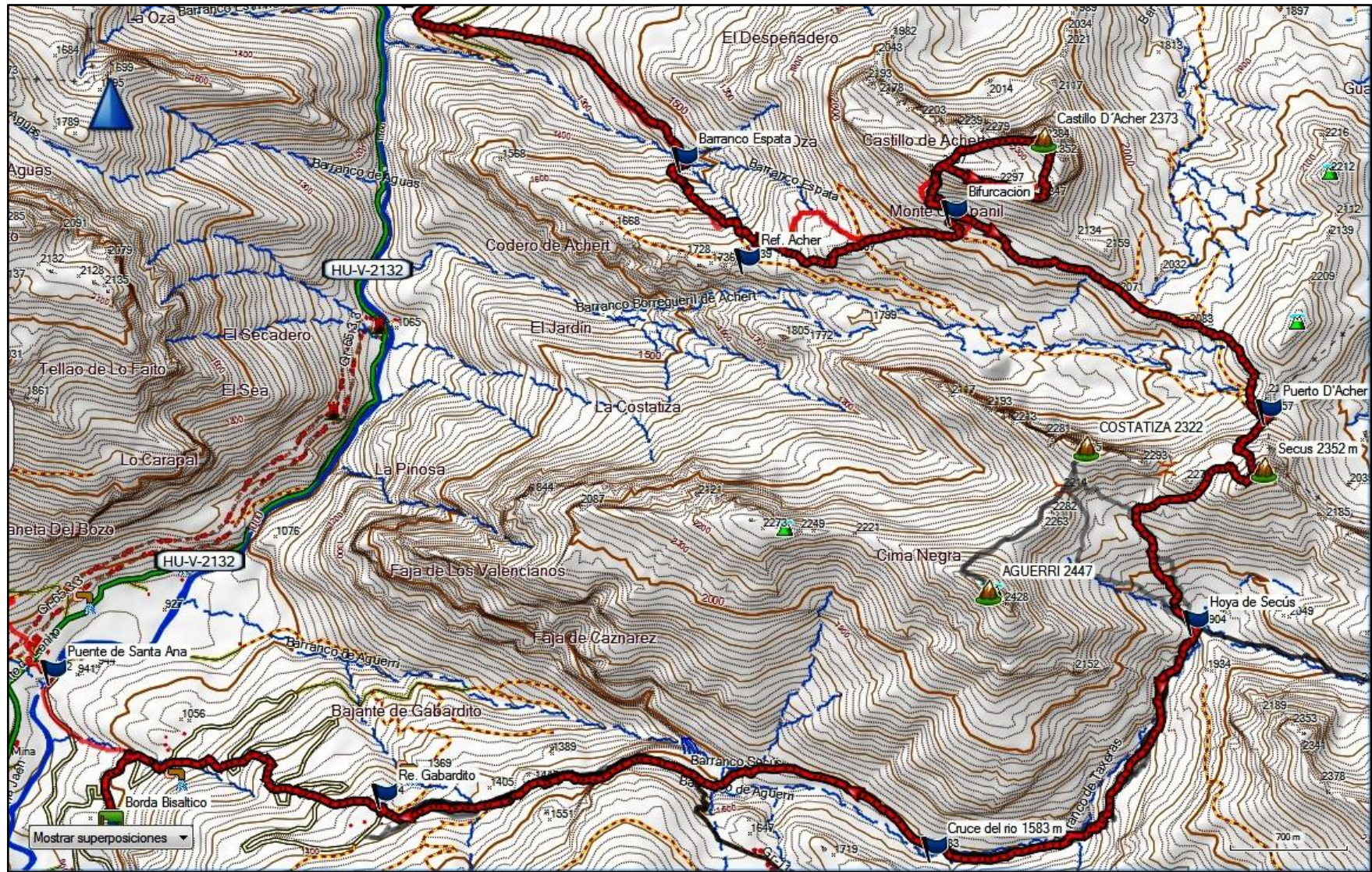
## SÁBADO 29 OPCIÓN 2: Refugio de Gabardito – Agüerri



## DOMINGO 30: Parking de Oza-Peña Forca-Lenito- Borda Bisaltico



# LUNES31 Opción A: Oza-Castillo de Acher-Secús-Gabardito-Bisaltico



## LUNES 31 Opción B: Oza-Castillo de Acher-Oza



## MARTES 1: Aparcamiento de la Mina (Guarrinza)-Chipeta

